

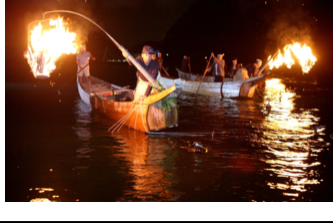
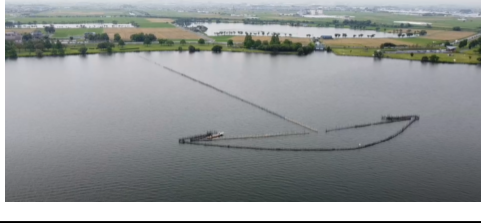


ConsuLink

July 2022 Newsletter

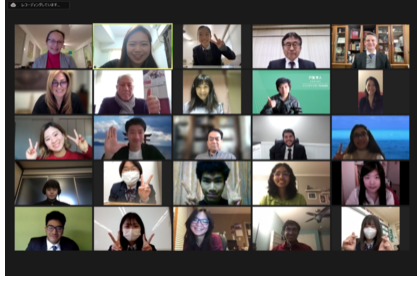
Keeping you updated on Japan-related news in Michigan and Ohio

Freshwater Fishing More than a Pastime in Japan



As an island nation, Japan is well known as one of the world's largest consumers and producers of seafood. Over the centuries, the Japanese have developed sophisticated techniques for harvesting freshwater fish from Japan's numerous rivers and lakes as well. One example is the fish traps called *eri* (pictured above left, and shown in this [video](#)) used to this day in Lake Biwa in Michigan's sister-state of Shiga prefecture. These traditional, stationary fish traps are made in an arrow shape from which the *ayu* ("sweetfish") find it difficult to escape. (For more details in English, see [Kawanabe et al., 2012](#).)

Another example is *ukai*, or "cormorant fishing" (pictured above right, and shown in this [video](#)), a 1300-year-old tradition for which the Nagara River in Gifu, Cincinnati's sister-city, is well known. On summer nights, fishing masters and specially trained cormorant birds hunt for *ayu* by the torchlight on their wooden boats. *Ukai* has been a major tourist attraction for centuries, drawing fans ranging from the great daimyō ODA Nobunaga in the 1500s to American actor Charlie Chaplin in the early 1900s.



Recreational fishing, a \$2 billion/year industry in each of the states of Michigan and Ohio, is also popular in Japan. In addition to *ayu*, fishers seek rainbow trout, or *nijimasu* in Japanese, in places such as the western highlands of Saitama prefecture, Ohio's sister-state (above left). Michigan and Shiga have built various exchange activities around their common interest in sustaining freshwater environments. Earlier this year, high schoolers in the Shiga-Michigan Assembly for Youth online exchange (above right) focused their discussions on United Nations sustainable development goals (SDGs), such as clean water, sustainable communities, and so on.

RECENT CONSULATE ACTIVITIES

Japanese Culture Celebrated Across MI & OH



The month of June brought various celebrations of Japanese culture across Michigan and Ohio. Fans of anime gathered at conventions including Colossalcon in Sandusky, OH, Anime Ohio in Sharonville, OH, and JAFAX (Japanese Animation Film & Art Expo) in Grand Rapids, MI. On 6/2, the Japan America Society of Michigan and Southwestern Ontario highlighted the architectural designs of Isamu Noguchi at their long-anticipated 30th anniversary celebration in Detroit. The art of bonsai was the focus of the Bonsai in Bloom exhibit at Matthaei Botanical Gardens in Ann Arbor, MI, and the Spring Bonsai Show in Cleveland, OH.

On 6/11, Consul General Shindo addressed the crowd at the Grand Rapids Asian Pacific Heritage Festival (above left and center). From 6/12-6/18, Ann Arbor Japan Week featured films, performances, and workshops, including an interactive presentation about traditional Japanese toys, hosted by the Consulate on 6/16 at the Ann Arbor District Library (above right). On 6/25, Japan was one of the cultures highlighted at the 11th annual International Festival in Toledo, OH, which is the sister city of Toyohashi in Aichi prefecture.

SPOTLIGHT ON JET PROGRAM PARTICIPANTS FROM MICHIGAN & OHIO

Michigan JET Learns Flexibility and Adaptability, Appreciates Local Flowers and Food



Last fall, the JET Program placed Crystal Slayton, of Clarkston, MI (pictured above left) in the city of Ōmura (pop. 95,000) in Nagasaki prefecture in Kyūshū, the southernmost of Japan's four major islands. Crystal reports that encountering new situations on a daily basis has taught her the importance of flexibility and adaptability. She has gained new friends and fun experiences by becoming more spontaneous and open to opportunities.

Crystal's personal blog documents her visits to famous places in Kyūshū, and highlights local specialties, such as Ōmura Zushi (sushi rice topped with various ingredients and cut into squares), and Ōmura Zakura (multi-layered cherry blossoms with 60-200 petals each; pictured above right).

CALENDAR

Exhibits & Events

Through October 9:
[Japan's Floating World](#) @ Cleveland Museum of Art, Cleveland, OH

Sat., July 2
[Ann Arbor \(MI\) Japanese Language Meetup](#) @ online platform

Thurs., July 7
Canton Museum of Art
[Witness to Wartime: The Painted Diary of Takuichi Fujii presentation](#) @ online platform
[Tanabata Festival](#) @ Saginaw (MI) Japanese Cultural Center

Sat., July 9
[Bonsai Open House](#) @ Hidden Lake Gardens, Tipton, MI
[Gifu-Cincinnati Sister City Committee Peace Bell Ceremony](#) @ Blue Ash, OH

Thurs., July 14
[Hofu-Monroe Book Club](#) @ online platform

Fri., July 15
[Van Buren District Library Anime/Manga Club](#) @ Covert, MI

Sat., July 16
[Anime Afternoon](#) @ Ellet Branch Library, Akron, OH

Sun., July 17
[Inside the Japanese Tea House](#) @ Meijer Gardens, Grand Rapids, MI
[Japanese Association of Toledo Summer Festival](#) @ Bowling Green, OH

Sat., July 23
[JASGC 30th Anniversary Golf Outing](#) @ Rising Sun, IN

QUICK LINKS

[Ministry of Foreign Affairs of Japan](#)



[Kizuna: The official magazine of the Government of Japan](#)

Digital publication reporting on a variety of topics, promoting stronger links between Japan and the world.

[Consulate General of Japan in Detroit](#)



ConsuLink is the official newsletter of the Consulate-General of Japan in Detroit

400 Renaissance Center, Suite 1600 | Detroit, MI 48243 US

[CGJ Website](#)

Share this email:



[Manage](#) your preferences | [Opt out](#) using TrueRemove™

Got this as a forward? [Sign up](#) to receive our future emails.

View this email [online](#).

400 Renaissance Center, Suite 1600
Detroit, MI | 48243 US

This email was sent to .
To continue receiving our emails, add us to your address book.

[Subscribe](#) to our email list.

emma